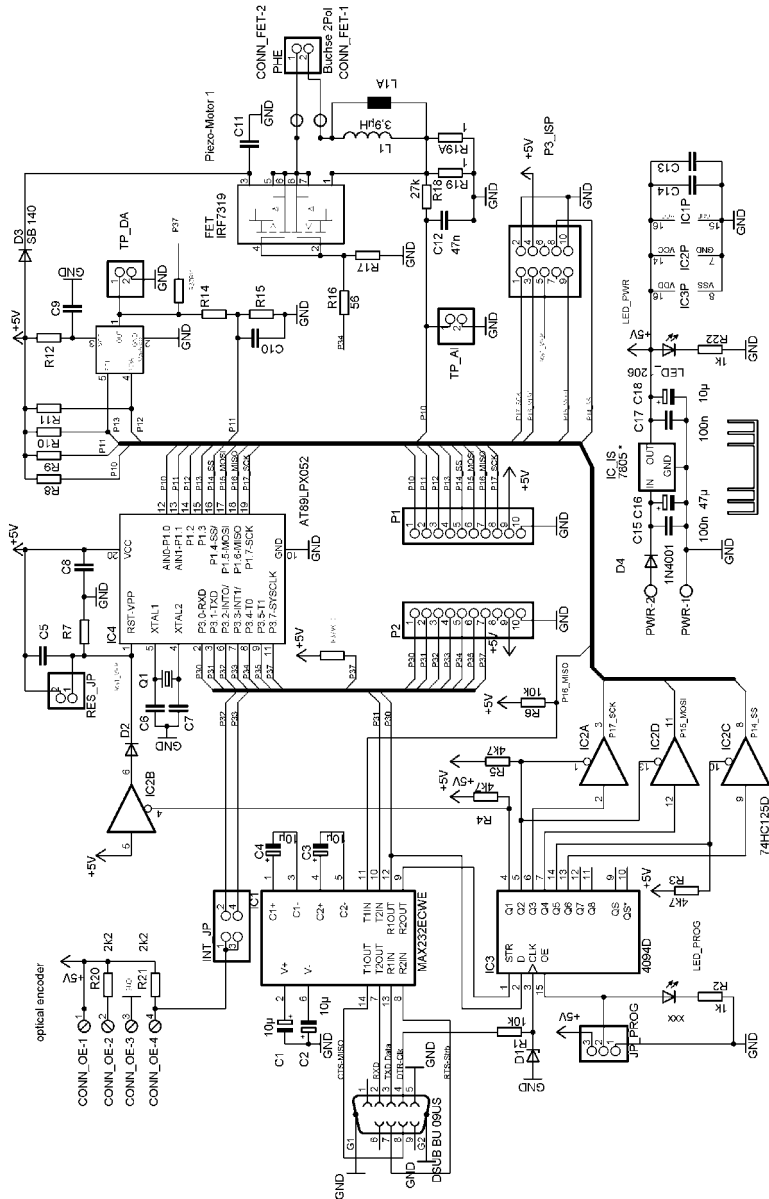
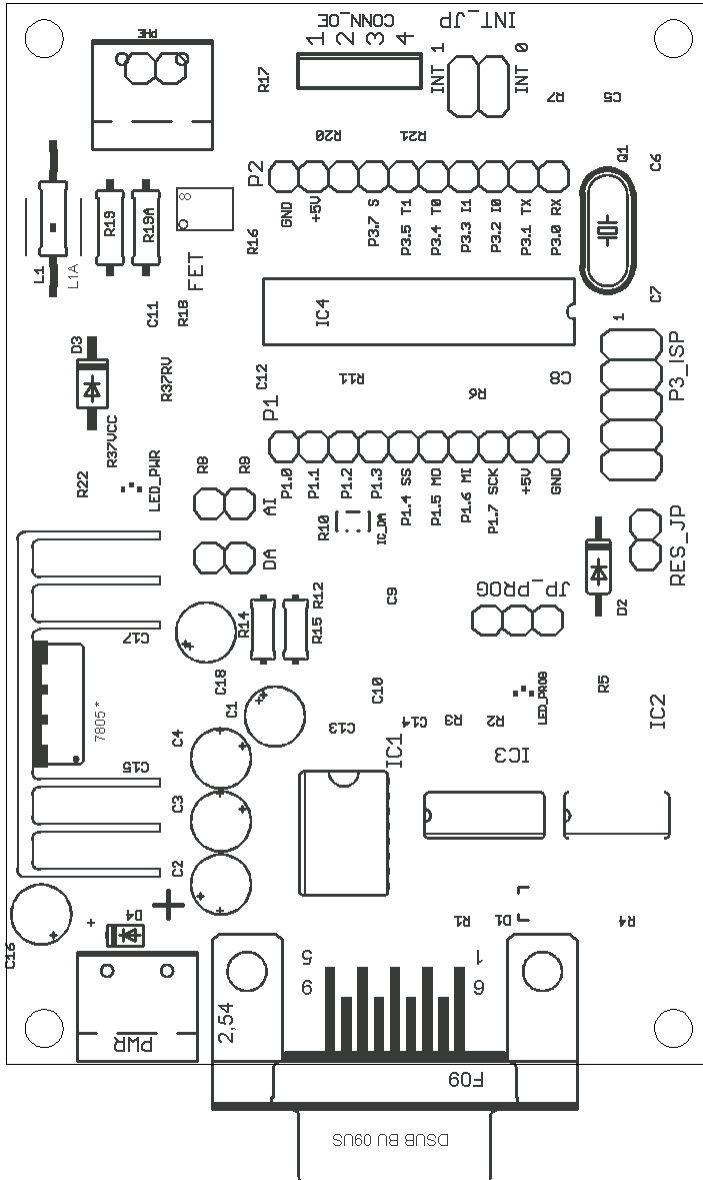


9.1 komplettes Schaltbild Ghost Hardware



9.2 komplette Bestückung Ghost Hardware



9.3 Bauteileliste:

Part	Value	Package
C1	10µ	E2-5
C2	10µ	E2-5
C3	10µ	E2-5
C4	10µ	E2-5
C5	100n	C1206
C6	22p	C1206
C7	22p	C1206
C8	100n	C1206K
C9	100n	C1206K
C10	*	C1206K
C11	100n	C1206K
C12	47n	C1206K
C13	100n	C1206K
C14	100n	C1206K
C15	100n	C1206K
C16	47µ	E2-5
C17	100n	C1206K
C18	10µ	E2-5
D1	4V7 0,5W	SOT23
D2	1N4148	DO35-10
D3	SB 140	DO41-10
D4	1N4001	5mm Raster
FET	IRF7319	SO-8
IC1	MAX232 CWE	SO16L
IC2	74HC125D	SO14
IC3	4094D	SO16
IC4	DIL gedrehter Sockel	DIL20 für Atmel LPx052
IC_DA	MAX538X	SOT23-5
IC_IS	78S05	Oder 78L05
L1	3,9µH *	0207/15 oder L1A
L1A	3,9µH SMD	Würth PD2
LED_PROG	LED_1206	CHIPLED_1206
LED_PWR	LED_1206	CHIPLED_1206
Q1	Crystal 11.059 MHz	HC49/S
R1	10k	M1206
R2	1k	M1206

R3	4k7	M1206
R4	4k7	M1206
R5	4k7	M1206
R6	10k	M1206
R7	*	M1206
R8	*	M1206
R9	*	M1206
R10	4k7 – 10K	M1206
R11	4k7 – 10K	M1206
R12	10	M1206
R14	2k2	0204/7
R15	680	0204/7
R16	56	M1206
R17	*	M1206
R18	27k	M1206
R19	1	0207/10 1/4W
R19A	1	0207/10 1/4W
R20	*	M1206
R21	*	M1206
R22	1k	M1206
R37RV	*	M1206
R37VCC	*	M1206
RES_JP	Pinhead	1X02
TP_AI	Pinhead	1X02
TP_DA	Pinhead	1X02
INT_JP	Pinhead	2X02
JP_PROG	Pinhead	1X03
P1	Pinhead	1X10
P2	Pinhead	1X10
P3_ISP	pinhead	2X05
CONN_OE	Pinhead	4POL254
CONN_SER	DSUB 9	F09HP
CONN_FET	*	W237-132
PHE	Buchse 2 pol 2.54mm	SPL 2
PWR		W237-132

* = je nach Anwendung